

Overview

TAP2422 is a 1GbE copper TAP with two network ports and two monitoring ports. It supports inline deployment for single 1GbE link, or passive deployment for two SPAN ports. The tapping traffic can be output in different ways, including separating upstream and downstream to different ports, or aggregating upstream and downstream to both ports.



TAP2422 is suitable to be used in the fields of telecom/mobile operator, data center, enterprise for applications such as traffic monitoring and analysis, network security and value added services.

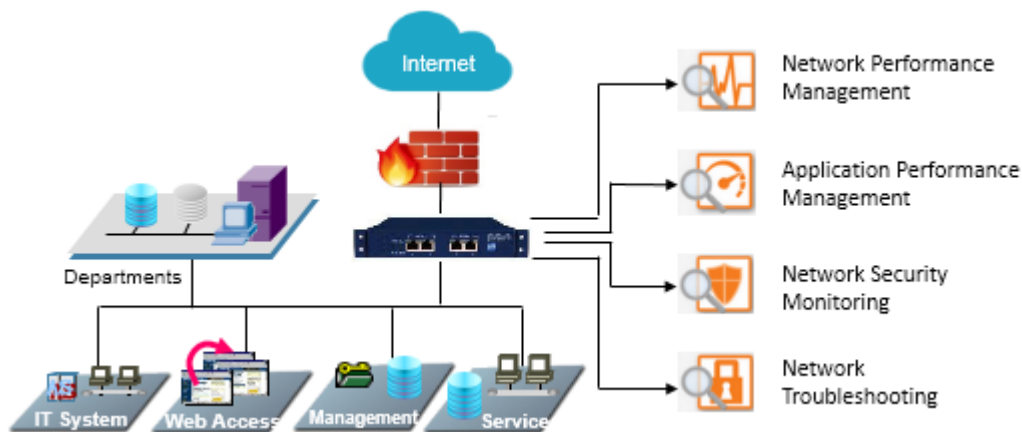
Features

- 1U height
- 2 network ports, 2 monitoring ports
- All ports support 10/100/1000M, half/full duplex
- Network ports (SPAN) and monitoring ports support MDI/MDIX adaptive
- Supports both inline mode and passive mode
- Transparent deployment in inline mode
- Separating output for upstream/downstream
- Aggregating output for upstream/downstream

Specifications

Features	Parameter
Dimensions	(L x W x H) 185 x 265 x 44 mm
Weight	< 2 Kg
Power Supply	Redundant Power Input AC 100 ~ 240V or DC -36 ~ -72V
Power Consumption	< 20 W
Operating Temperature	0°C ~ 40°C
Storage Temperature	-40°C ~ 75°C
Humidity	10% ~ 95% (Non-condensing)

Application



Order Information

Order Number	Description
TAP2422A-201	1GbE copper TAP, 1U height, 2 network ports and 2 monitoring ports, redundant AC power input
TAP2422D-201	1GbE copper TAP, 1U height, 2 network ports and 2 monitoring ports, redundant DC power input